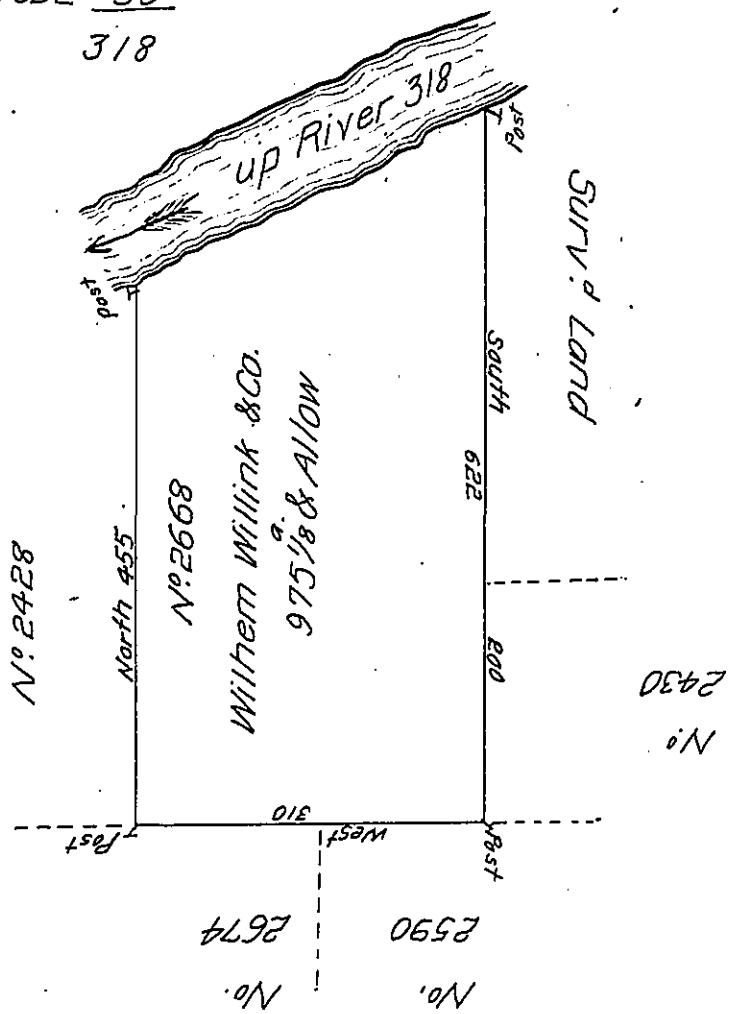


Courses & Dist. up  
the River  
N55 E 28  
N65 E 240  
N62 E 50  
318



By Virtue of Warrant dated 12<sup>th</sup> Decem. 1792 N<sup>o</sup> 2428 Surveyed on the 26<sup>th</sup> August 1795 to Wilhem Willink & the above described Tract of 975<sup>1</sup>/<sub>8</sub> Acres of Land Situate on the East side of Allegheny River in District N<sup>o</sup> 5 Lycoming County.

To Dan<sup>l</sup> Brodhead Esq<sup>r</sup>  
 Surveyor Gen<sup>l</sup>

W<sup>m</sup> P. Brady D.S.

IN TESTIMONY that the above is a copy of the original remaining on file in the Department of Internal Affairs of Pennsylvania, made conformably to an Act of Assembly approved the 16th day of February, 1833, I have hereunto set my Hand and caused the Seal of said Department to be affixed at Harrisburg, this Twenty fifth day of June 1907

*Henry Howell*

Secretary of Internal Affairs.